

AP 2-D Art and Design Portfolio

Amelia Fast

2022



Image 1

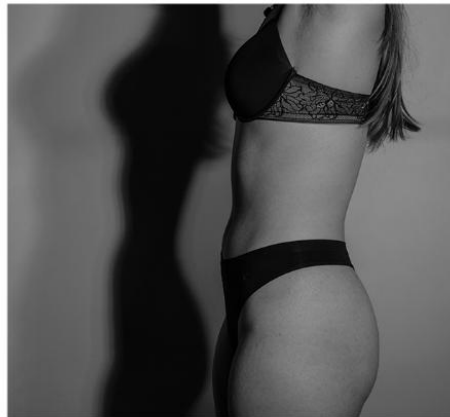
Sustained Investigation

Height: 22 inches

Width: 17 inches

Material(s): Continuous LED light, flower, yellow filter photoshop, 45 degree directional light, Canon Rebel T5

Process(es): Flower represents beauty Model is insecure w facial feature Placing flower over face mask insecurity



The image on the right was one of my first shoots. It was centrally focused on insecurities, hiding the face out of shame. Then as I became comfortable with my models, they gained confidence. I centered them in the frame, directed the model to exude a strong, dominant energy. The "women" sign reiterates femininity within a she/they identification.

Image 2

Sustained Investigation

Height: NA

Width: NA

Material(s): Continuous LED light, sign, Purple BW filter photoshop, 45 degree directional light, Canon Rebel T5

Process(es): Created collage and didnt choose any images from this shoot. see notes in slide for thinking.

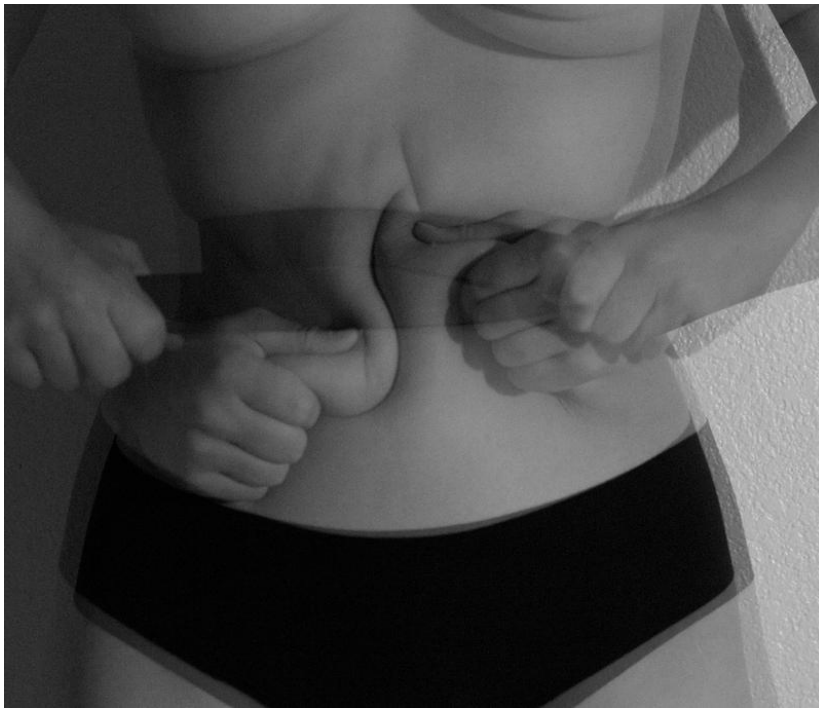


Image 3

Sustained Investigation

Height: 17 inches

Width: 17 inches

Material(s): Continuous LED light, overlay, belt, bw photoshop, 45 degree directional light, Canon Rebel T5

Process(es): overlay 2 images make distorted feeling. Insecurities of stomach w tight clothes. belt to add drama



The image to the left was taken with simple instructions given by me: "Lean on the sink and look in the mirror." The model is listening to music and was preoccupied that morning. I was showing a representation of how they feels about themselves. The model wasn't fully exuding this emotion and the highlight on the top of their head is blown out. I was able to re-shoot to achieve a proper exposure and directed the model again to look at themselves in the mirror the way they normally look at themselves everyday. The image shows dissapointment, angst, and hopelessness within the subject.



Image 4

Sustained Investigation

Height: NA

Width: NA

Material(s): overhead lighting, added green filter in PSD to emphasize the feeling of disgust with oneself. Canon

Process(es): Created collage and chose image as SW see notes in slide for thinking. Rule of thirds comp.



Image 5

Sustained Investigation

Height: 24 inches

Width: 17 inches

Material(s): Pinterest collage, photoshop, body positioning to show highlights/ shadows of the body. inspiration.

Process(es): gathered images give me idea how to approach SI6. Wanted to emphasize dips and valleys of the body.



Image 6

Sustained Investigation

Height: 17 inches

Width: 17 inches

Material(s): nat lighting from N window. BW into PSD. Canon Rebel T5, increased saturation. fill the frame comp.

Process(es): asked model tighten shoulder blades accentuate shadows/highlights of skin, then showed acne



As I shot with this model, they explained that they have no physical insecurities, but has strong comfort in showing both masculinity and femininity. After picking their favorite flower, they freely moved around, posing, and allowing room for their personality to fill the studio. I used the flowers to accentuate femininity within men, not often shown in our society.

Image 7

Sustained Investigation

Height: NA

Width: NA

Material(s): Continuous LED light, sign, blue BW filter photoshop, 45 degree directional light, Canon Rebel, flwr

Process(es): Created collage and didnt choose any images from this shoot. see notes in slide for thinking.



Image 8

Sustained Investigation

Height: 17 inches

Width: 17 inches

Material(s): Continuous LED light, sign, sepia filter photoshop, 45 degree directional light, Canon Rebel, flwr

Process(es): model stated no phys insecurities. insecurity consists of showing fem. traits. He posed held flower

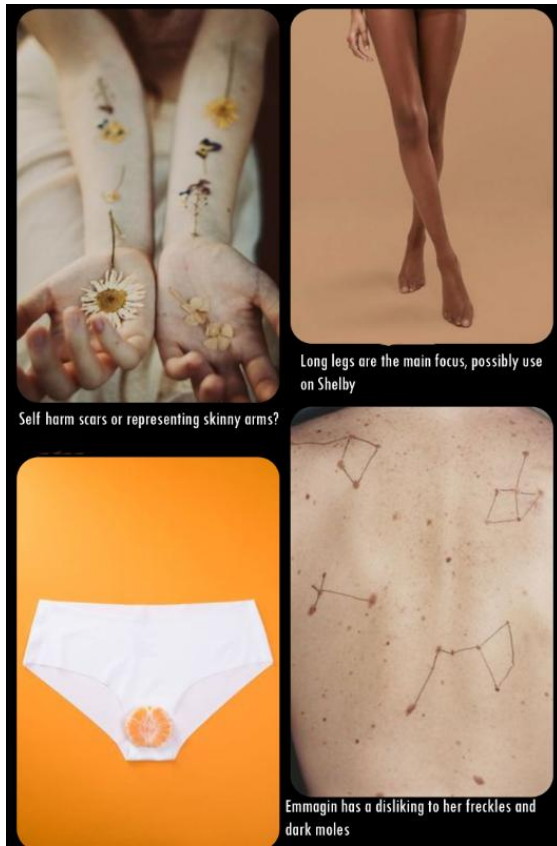


Image 9

Sustained Investigation

Height: 24 inches

Width: 17 inches

Material(s): Pinterest collage, photoshop, body positioning w objects on body used for inspiration.

Process(es): gathered images give me idea how to approach SI10. Wanted to emphasize rep of body parts w objects



Image 10

Sustained Investigation

Height: 17 inches

Width: 22 inches

Material(s): 45 degree directional light, Canon Rebel T5, paint, apples, B/W filter, photoshop, white backdrop

Process(es): model insecure of size of breasts. Paint to add contrast. smaller and large apple rep unevenness.

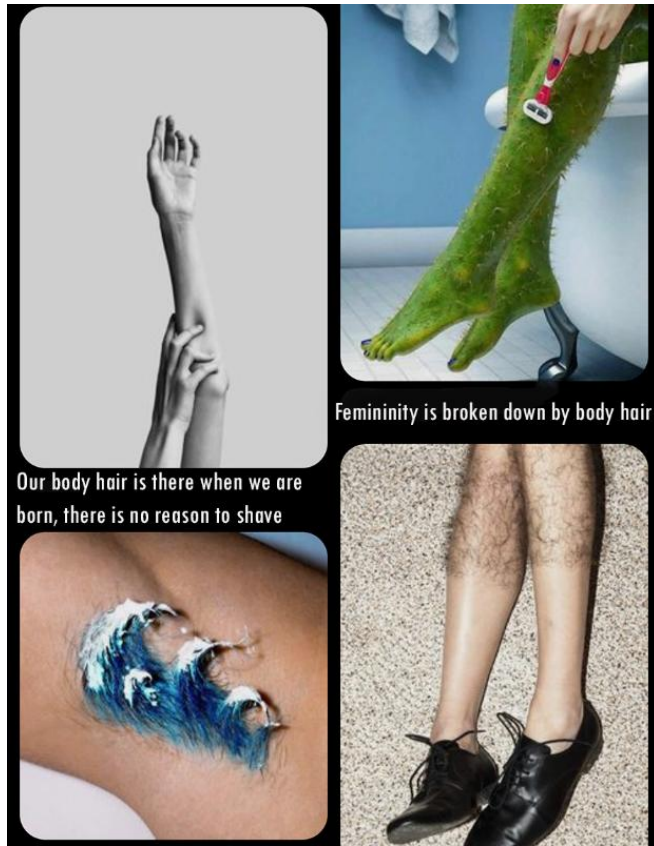


Image 11

Sustained Investigation

Height: 24 inches

Width: 17 inches

Material(s): Pinterest collage, photoshop, body positioning w objects on body used for inspiration.

Process(es): gathered images give me idea how to approach SI12. Wanted to emphasize hair on the body.

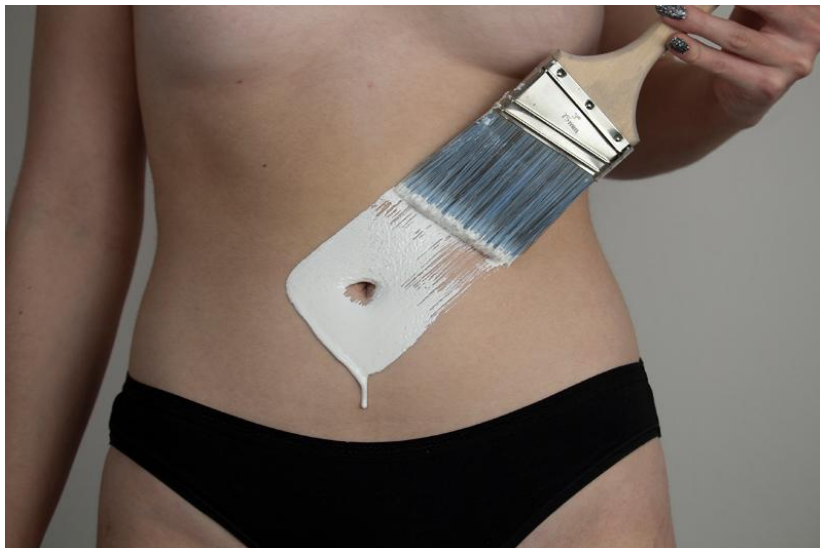


Image 12

Sustained Investigation

Height: 17 inches

Width: 22 inches

Material(s): 45 degree directional light, Canon Rebel T5, paint, brush, B/W filter, photoshop, white backdrop

Process(es): insecure of stomach hair. Used paint to represent the qualities of her being an artist.

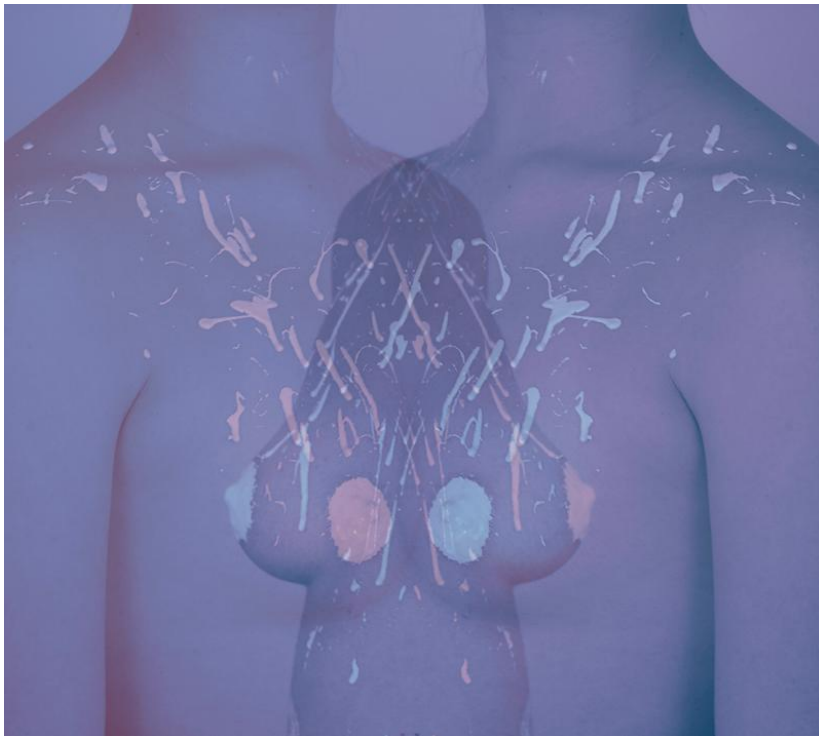


Image 13

Sustained Investigation

Height: 17 inches

Width: 17 inches

Material(s): red/ blue filter, paint, white backdrop, Canon Rebel T5, 45 degree directional light. overlay in PSD

Process(es): overlay of two images and then flipped them horizontally to give a merging feel.



Image 14

Sustained Investigation

Height: 17 inches

Width: 17 inches

Material(s): black backdrop, Canon Rebel T5, 90 degree stage light, flowers, b/w convert to photoshop.

Process(es): model chose flower and placed them on top, which created duality of texture against skin.



Image 15

Sustained Investigation

Height: 17 inches

Width: 17 inches

Material(s): white backdrop, Canon Rebel T5, 45 degree directional light. overlay of two images in PSD

Process(es): photographed model to sit as a goddess. Folds of body were emphasized with addl. overlay.

Written Evidence

Sustained Investigation

1. Identify the question(s) or inquiry that guided your sustained investigation.
2. Describe how your sustained investigation shows evidence of practice, experimentation, and revision guided by your question(s) or inquiry.

Response 1:

Originally I began exploring physical insecurities/secureities within oneself (SI1). As I moved throughout the year my EQ formed into how can I transform personal insecurities and reflect beauty to the viewer? I photographed various sexualities, body types and insecurities. With every shoot I would ask my model what their insecurity was? What they liked/disliked about their body. I would let them walk around my studio and pick out props/objects that they were drawn to (SI2, 8, 12, 14). With each shoot I shot around 150 images.

Response 2:

As the model became more comfortable with the camera, my images were more relaxed and natural in appearance (SI3, 13, 15). I colorized multiple photos in Photoshop (SI1, 2, 4, 7, 8, 13). As my work advanced, I started to use 2 colors (SI13) and would create a more obscure look. My use of paint would create a feeling of contrast, changing my use of props. During the year I studied the Jen Davis and Catherine Opie, cont. photographers who turn the camera on themselves and explore body issues. By investigating the insecurities both male and female possess brings awareness to pressures from society



Work 1

Selected Works

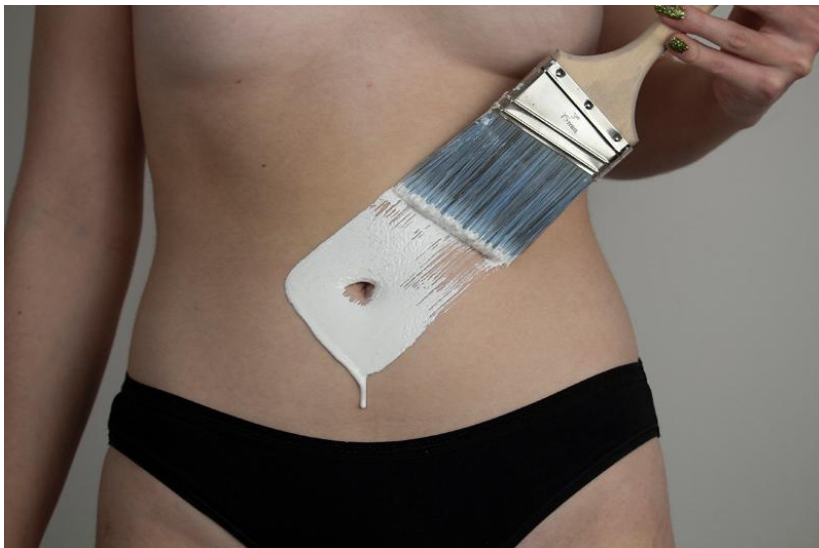
Height: 14 inches

Width: 23 inches

Idea(s): Reflection
Feelings about herself
Green represent disgust
Hair to partially hide face

Material(s): overhead lighting, added green filter in PSD to emphasize the feeling of disgust with oneself.
Canon

Process(es): Told model to look at herself as she does everyday.
Lowered exposure to enhance shadows and sadness



Work 2

Selected Works

Height: 14 inches

Width: 23 inches

Idea(s): Cover stomach hairs
She is an artist
White to symbolize purity
Focus on stomach, not breasts

Material(s): 45 degree directional light, Canon Rebel T5, paint, brush, B/W filter, photoshop, white backdrop

Process(es): insecure of stomach hair. Used paint to represent the qualities of her being an artist.



Work 3

Selected Works

Height: 14 inches

Width: 18 inches

Idea(s): Cover up body but in a feminine way
Roses are romantic
Eye contact feels emotional

Material(s): Continuous LED light, sign, sepia filter photoshop, 45 degree directional light, Canon Rebel, flwr

Process(es): model stated no phys insecurities. insecurity consists of showing fem. traits. He posed held flower



Work 4

Selected Works

Height: 16 inches

Width: 19 inches

Idea(s): Sit like goddess with legs to the side
Then sit how you would with body behind legs

Material(s): white backdrop, Canon Rebel T5, 45 degree directional light. overlay of two images in PSD

Process(es): photographed model to sit as a goddess. Folds of body were emphasized with addl. overlay.



Work 5

Selected Works

Height: 17 inches

Width: 19 inches

Idea(s): Don't necessarily hide the breasts but transform them with the help of the flowers

Material(s): black backdrop, Canon Rebel T5, 90 degree stage light, flowers, b/w convert to photoshop.

Process(es): model chose flower and placed them on top, which created duality of texture against skin