



# **AP 2-D Art and Design Portfolio**

brittany weeks

2021



## Image 1

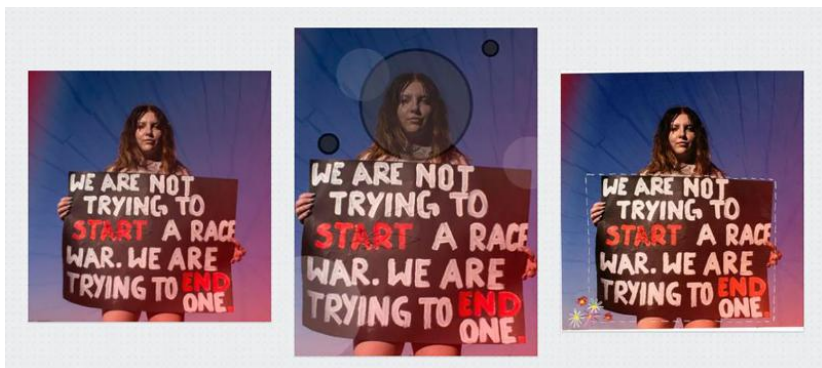
Sustained Investigation

**Height:** 13 inches

**Width:** 19 inches

**Material(s):** DSLR Nikon Rebel ti,  
adobe photoshop

**Process(es):** Brother layed down in a hammock. Had him hug his chest to represent being trapped



## Image 2

Sustained Investigation

**Height:** N/A

**Width:** N/A

**Material(s):** DSLR Nikon Rebel ti,  
adobe photoshop

**Process(es):** Experimented with shapes and stitching into the image.



### Image 3

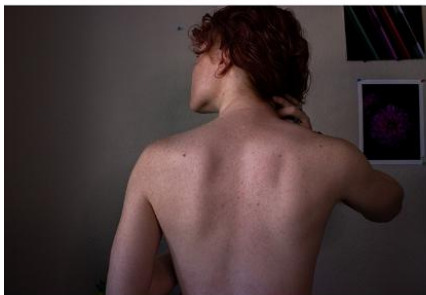
Sustained Investigation

Height: 19 inches

Width: 13 inches

Material(s): DSLR Nikon Rebel ti, overlay with texture image, adobe photoshop

Process(es): Went to a field and had a friend hold a sign she made for a rally attended



### Image 4

Sustained Investigation

Height: N/A

Width: N/A

Material(s): DSLR Nikon Rebel ti, overlay with texture, adobe photoshop.

Process(es): Experimented with the opacity of the text and overlay. Offensive text with romantic hearts.



## Image 5

Sustained Investigation

Height: 13 inches

Width: 19 inches

**Material(s):** DSLR Nikon Rebel ti, overlay with text and texture, adobe photoshop

**Process(es):** Bare skin creates feeling being vulnerable hiding the face still shows insecurities often felt



## Image 6

Sustained Investigation

Height: 13 inches

Width: 19 inches

**Material(s):** DSLR Nikon Rebel ti, overlay with various adobe fonts, adobe photoshop

**Process(es):** Text shows the negative words or phrases others have used against me.



## Image 7

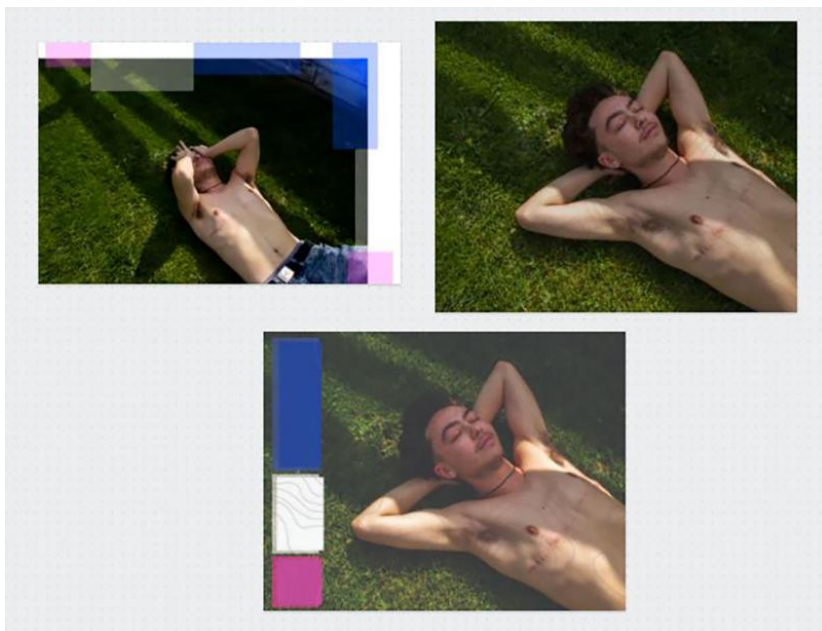
Sustained Investigation

**Height:** 13 inches

**Width:** 19 inches

**Material(s):** DSLR Nikon Rebel ti, overlay with glitch style boxes and texture, adobe photoshop.

**Process(es):** Covered eyes and mouth to represent feeling trapped and held back.



## Image 8

Sustained Investigation

**Height:** N/A

**Width:** N/A

**Material(s):** DSLR Nikon Rebel ti, overlay, adobe photoshop.

**Process(es):** Experimented with shapes add a graphic design feel .Trans pride flag pink blue and white.



### Image 9

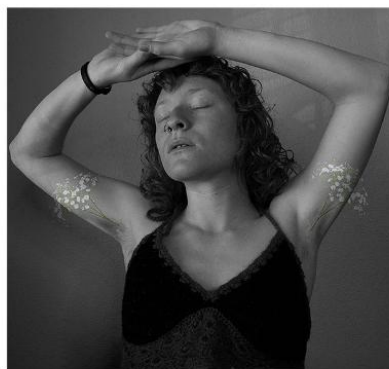
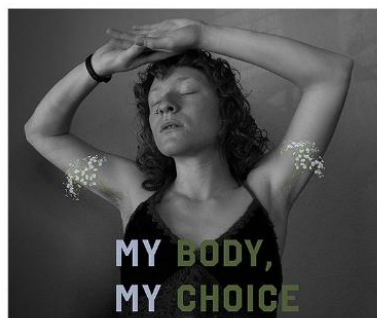
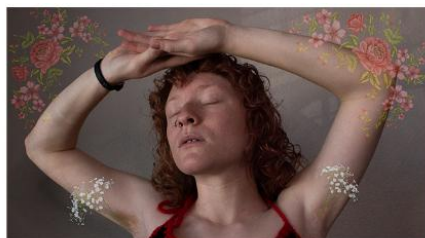
Sustained Investigation

**Height:** 13 inches

**Width:** 19 inches

**Material(s):** DSLR Nikon Rebel ti, topographical lines overlayed on top, adobe photoshop.

**Process(es):** Laid in field and added topographical map lines to show the lay of the body and emphasize scar.



### Image 10

Sustained Investigation

**Height:** N/A

**Width:** N/A

**Material(s):** DSLR Nikon Rebel ti, adobe photoshop

**Process(es):** Experimented with text and overlays on the picture.



### Image 11

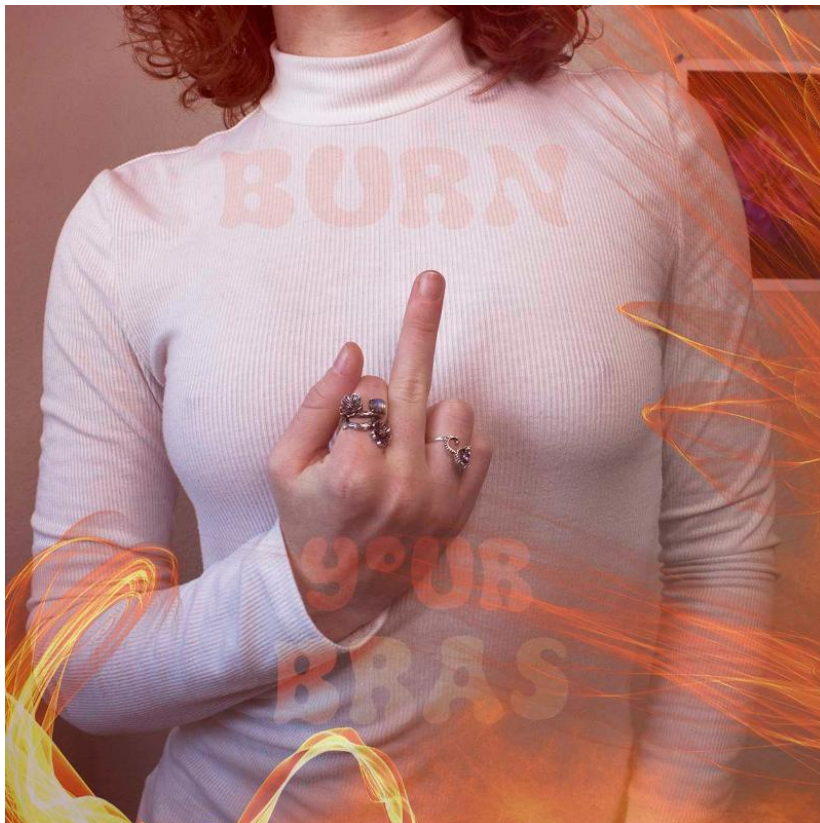
Sustained Investigation

**Height:** 13 inches

**Width:** 19 inches

**Material(s):** DSLR Nikon Rebel ti, adobe photoshop, flower overlay

**Process(es):** Revealed natural body hair and comfort with it. Open arms show vulnerability. Flower is femininity.



### Image 12

Sustained Investigation

**Height:** 19 inches

**Width:** 13 inches

**Material(s):** DSLR Nikon Rebel ti, adobe fonts, overlay, adobe photoshop.

**Process(es):** No bra and middle finger are symbolizing control over own body and 60s feminist movement.



### Image 13

Sustained Investigation

**Height:** 13 inches

**Width:** 19 inches

**Material(s):** DSLR Nikon Rebel ti, adobe font, adobe photoshop.

**Process(es):** Used an object society uses to sexualize women, as a symbol of importance of consent



### Image 14

Sustained Investigation

**Height:** N/A

**Width:** N/A

**Material(s):** DSLR Nikon Rebel ti, adobe photoshop

**Process(es):** Added depth to the image with color. added pink and a heart overlay to symbolize love





## Image 15

Sustained Investigation

**Height:** 13 inches

**Width:** 19 inches

**Material(s):** Iphone XR, adobe photoshop

**Process(es):** Held girlfriends hand. turned b and w for emphasis on emotions and to rid of distracting elements

## Written Evidence

Sustained Investigation

**Identify the question(s) or inquiry that guided your sustained investigation.**

**Describe how your sustained investigation shows evidence of practice, experimentation, and revision guided by your question(s) or inquiry.**

### Response:

The question guiding my work was, "how can I portray inequalities that are present throughout my life?" I captured pieces that make people think about their role in society and the language they are using. I photographed issues surrounding race, gender and sexuality and how they all play a role in my life and my friends. In SI 2 I added red color to connect it to the red text on the poster and an overlay to create texture and movement. This led me to SI 8. I show my friends gender in a calm, comfortable inviting way. Adding the topographical overlay helped with the flow of the image and mapping of the body. SI 11 is similar in the portrayal of calmness in ones body by opening the arms. SI5,6 both show the negative phrases, words I've heard or been called. Using the human body personifies the hatred in the words written. SI12,13 convey owning the female body. SI12 relates to the 60s feminist Burn Your Bras movement. Invented by men as another way to constrict and confine women with their bodies. We should burn the items and ideologies that people use for their own sexual pleasure. SI13 is teaching consent. The message is that no matter the type of clothing, no means no.



## Work 1

Selected Works

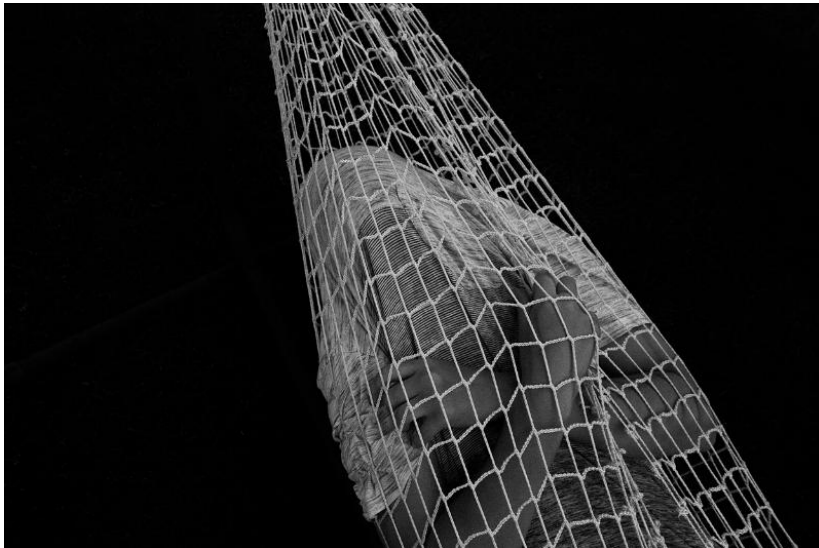
**Height:** 17 inches

**Width:** 22 inches

**Idea(s):** Open arms show happiness and content with oneself. Feelings of trapped in the wrong body disappear.

**Material(s):** DSLR Nikon Rebel ti, adobe photoshop, topographical lines overlay.

**Process(es):** laid in field and added topographical map lines to show the lay of the body and emphasize scar.



## Work 2

Selected Works

**Height:** 24 inches

**Width:** 36 inches

**Idea(s):** Feeling trapped in a cocoon in the fetal position to represent safety felt when in the womb.

**Material(s):** DSLR Nikon Rebel ti, adobe photoshop, hammock

**Process(es):** Brother layed down in a hammock. Had him hug his chest to represent being trapped. Turned image B/W.



### Work 3

Selected Works

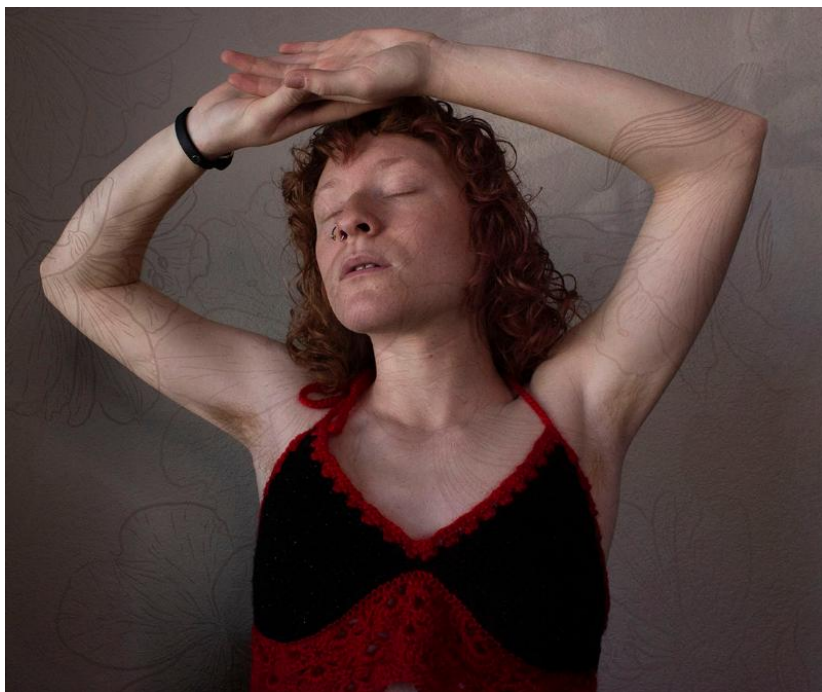
**Height:** 13 inches

**Width:** 19 inches

**Idea(s):** Give an emphasis on his scars and necklace to show personality. Shadow creates pattern over body.

**Material(s):** DSLR Nikon Rebel ti, adobe photoshop

**Process(es):** Had friend stand on opposite side of a fence. Turned b and w for depth



### Work 4

Selected Works

**Height:** 13 inches

**Width:** 19 inches

**Idea(s):** Calmness shows the comfort in their body. Flowers feel feminine and represent nature and growth.

**Material(s):** DSLR Nikon Rebel ti, adobe photoshop, flower overlay..

**Process(es):** Revealed natural body hair and comfort with it. Open arms show vulnerability. Flower is femininity.



## Work 5

Selected Works

**Height:** 19 inches

**Width:** 13 inches

**Idea(s):** Inspired by the 60s feminist movement. Symbolizes getting rid of sexist ideologies.

**Material(s):** DSLR Nikon Rebel ti, adobe photoshop, adobe fonts and blending overlays.

**Process(es):** No bra and middle finger are symbolizing control over own body and 60s feminist movement.