

AP 2-D Art and Design Portfolio

Owen Campbell

2021

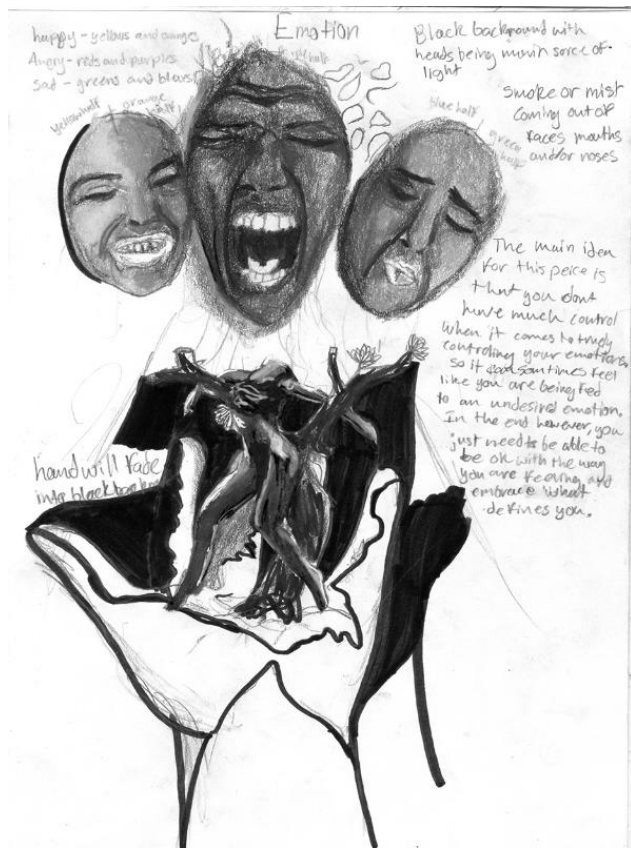


Image 1

Sustained Investigation

Height: NA

Width: NA

Material(s): sketchbook, pencil, micron pen.

Process(es): Sketched out my idea of what moods feel like to me.

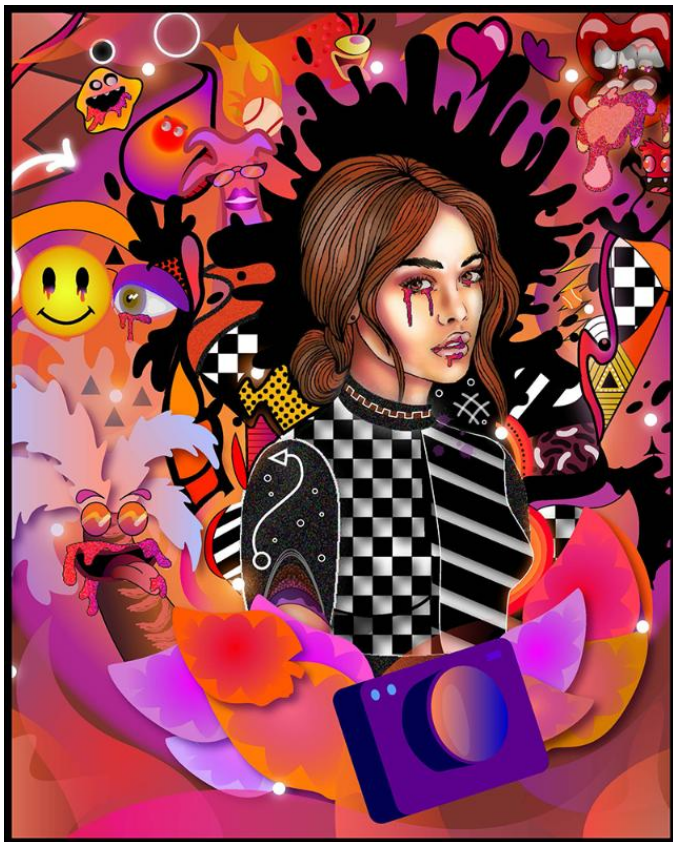


Image 2

Sustained Investigation

Height: 19 inches

Width: 13 inches

Material(s): Adobe Illustrator

Process(es): Shows the personality of a subject mixed with an acid trip.

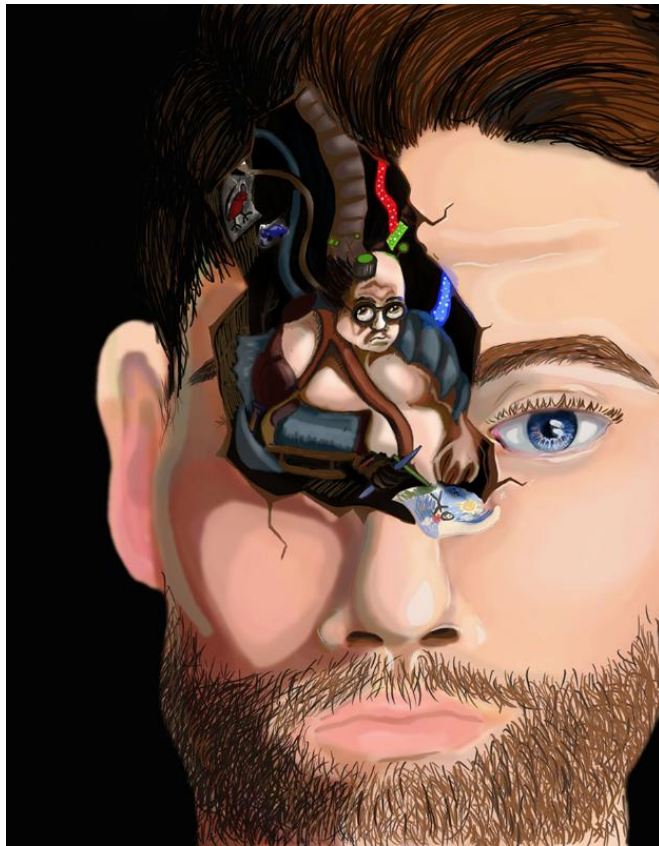


Image 5

Sustained Investigation

Height: 22 inches

Width: 17 inches

Material(s): Adobe Photoshop

Process(es): Wanted to show abstract depiction of an individuals personal traits.



Image 6

Sustained Investigation

Height: NA

Width: NA

Material(s): Adobe Photoshop

Process(es): Detail of SI 7



Image 7

Sustained Investigation

Height: 22 inches

Width: 17 inches

Material(s): Adobe Photoshop

Process(es): Meant to show trust and calm interaction from a dangerous subject.



Image 8

Sustained Investigation

Height: NA

Width: na

Material(s): Sketchbook, Pencil

Process(es): Depiction of figure that resides in creative side of brain



Image 9

Sustained Investigation

Height: 22 inches

Width: 17 inches

Material(s): Adobe Photoshop

Process(es): Displays suggestive mannerisms while being made of formless subject matter



Image 10

Sustained Investigation

Height: NA

Width: NA

Material(s): Sketchbook, Pencil

Process(es): Quick sketch of figure displaying atmospheric power



Image 11

Sustained Investigation

Height: 22 inches

Width: 17 inches

Material(s): Adobe Illustrator

Process(es): A multitude of individual layers meant to show movement

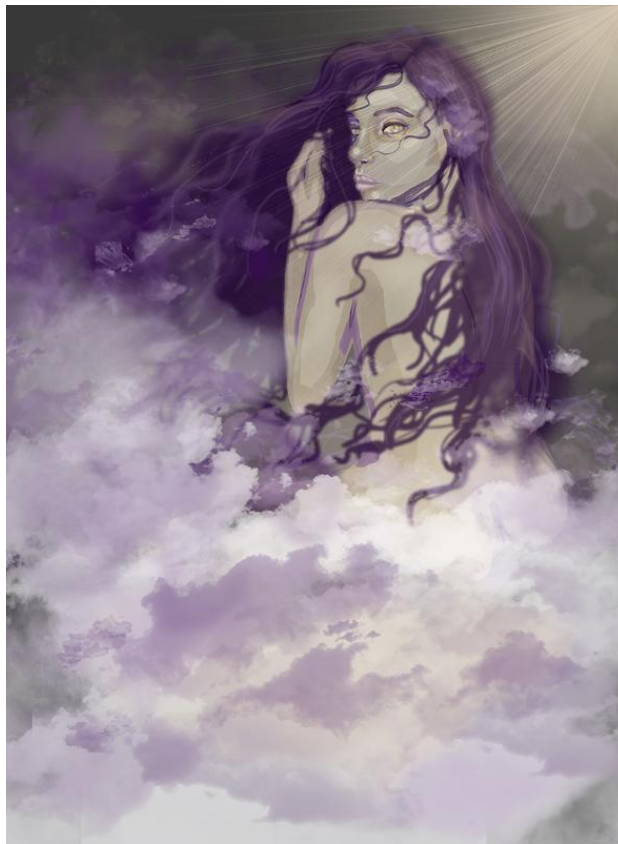


Image 12

Sustained Investigation

Height: 22 inches

Width: 17 inches

Material(s): Adobe Photoshop

Process(es): Muddy and mysterious human depiction in effortless atmosphere



Image 13

Sustained Investigation

Height: NA

Width: NA

Material(s): Sketchbook, Pencil

Process(es): Quick sketch of balance between people and the environment.

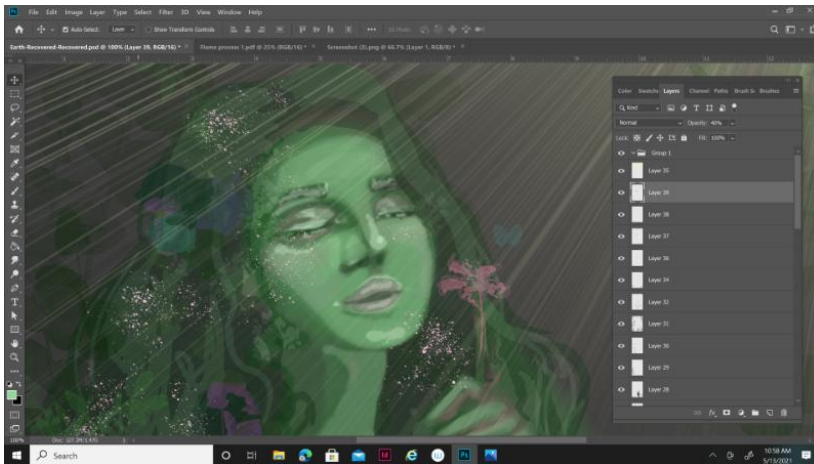


Image 14

Sustained Investigation

Height: NA

Width: NA

Material(s): Adobe Photoshop

Process(es): Detail of 15

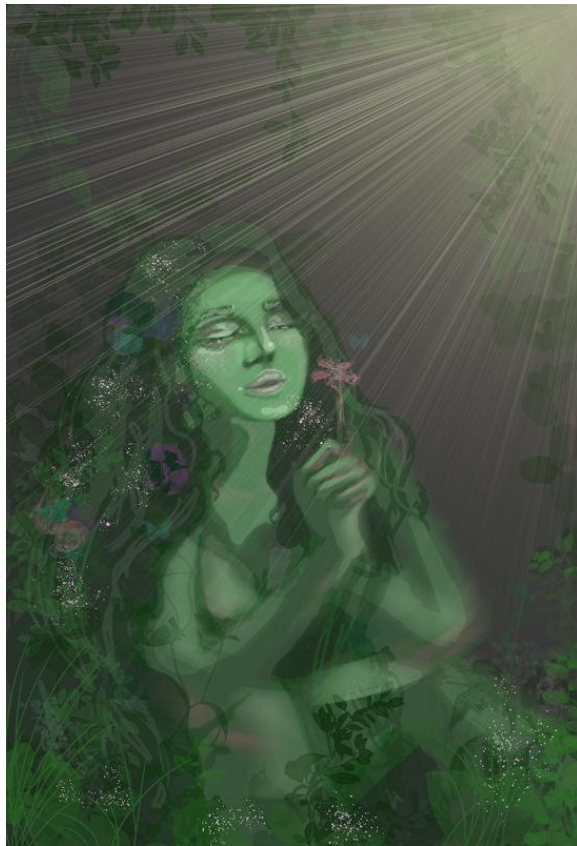


Image 15

Sustained Investigation

Height: 22 inches

Width: 17 inches

Material(s): Adobe Photoshop

Process(es): An earthly figure in a euphoric state surrounded by layers of overgrowth

Written Evidence

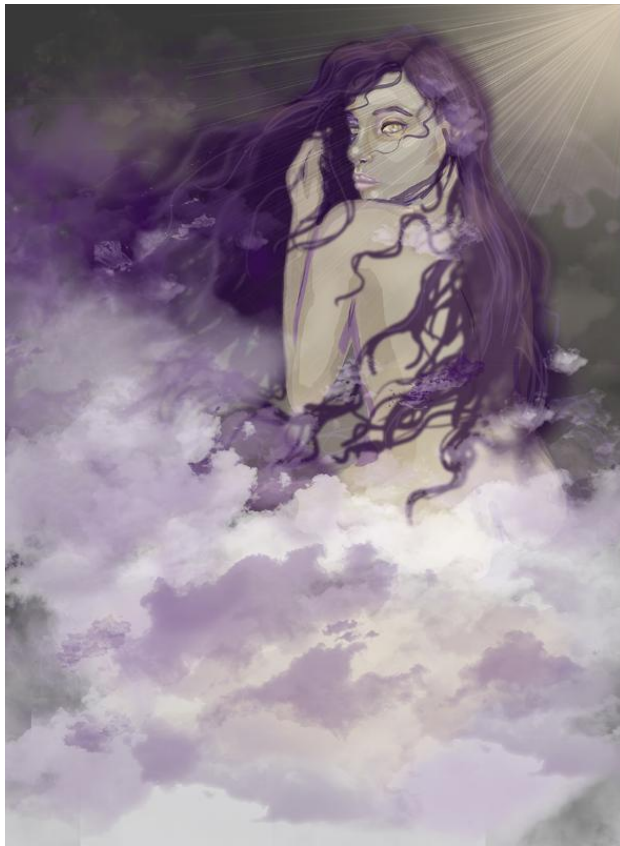
Sustained Investigation

Identify the question(s) or inquiry that guided your sustained investigation.

Describe how your sustained investigation shows evidence of practice, experimentation, and revision guided by your question(s) or inquiry.

Response:

My SI originally focused on functions of the human brain (SI1-4). My work developed into a collection of female figures representing the four elements; earth(15), air(12), fire(9), water(7). I incorporated senses of seduction, mystery, tranquility, and strength. An overall alluring presence emulated with color draws the viewer in. For each of my pieces, I incorporated a black background to separate the figure from the complex atmosphere. In SI7 I used hard brush strokes accompanied by glowing brush effects to give the presence of light and shown holding her hand out offering stability and trust to those approaching her. SI9, Smooth and gelatin-like strokes were used to show wet and organic matter and her body language is strong and forceful. The water shows aggressive movement swirling around her and leading the viewer up. SI11s movement is caught in flight with multiple blending modes behind the foreground. SI12,15 consists of foggy and muddy layers to create an impressionistic painting style. The surroundings become secluded and create depth with blending modes. For their forms their conservative and less revealing, meant to intrigue the viewer to investigate their stories.



Work 1

Selected Works

Height: 22 inches

Width: 17 inches

Idea(s): Wanted depict air as a humanoid being, shown in mysterious and unidentified background

Material(s): Adobe Photoshop

Process(es): Muddy and mysterious human depiction in effortless atmosphere



Work 2

Selected Works

Height: 22 inches

Width: 17 inches

Idea(s): Represent fire as an antonym to its usually destructive and unforgiving reputation

Material(s): Adobe Photoshop

Process(es): Meant to show trust and calm interaction from a dangerous subject.



Work 3

Selected Works

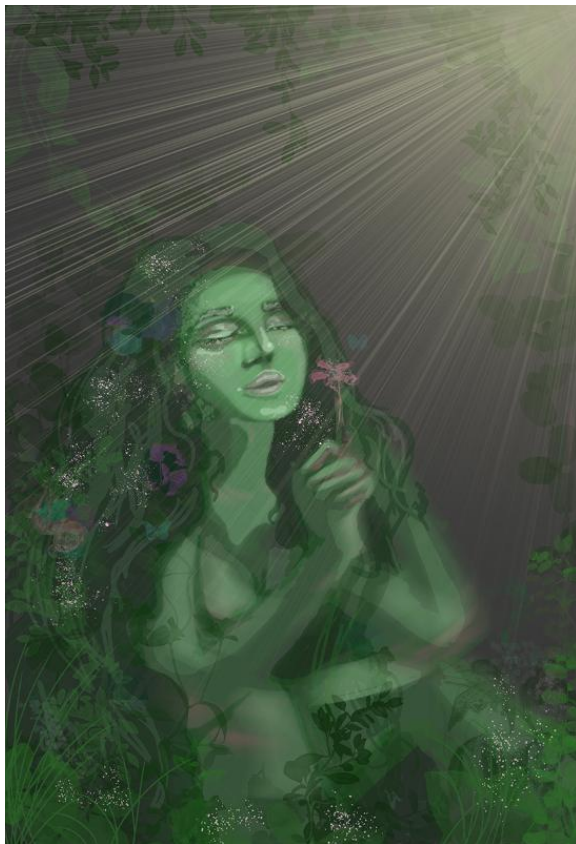
Height: 22 inches

Width: 17 inches

Idea(s): Create a sense of eroticism and power through water, open to interpretation from the viewer

Material(s): Adobe Photoshop

Process(es): Displays suggestive mannerisms while being made of no solid subject matter



Work 4

Selected Works

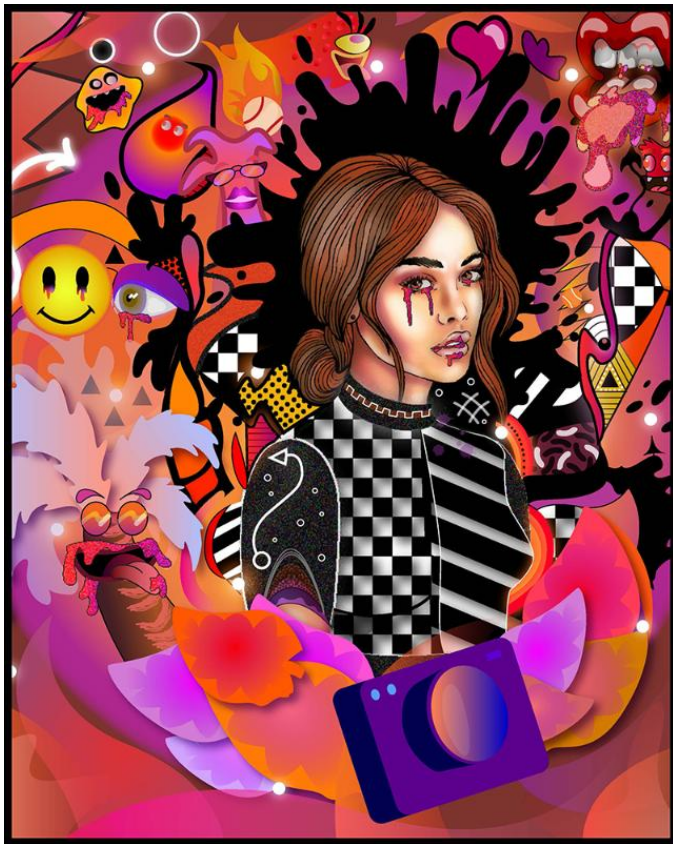
Height: 22 inches

Width: 17 inches

Idea(s): Have a highlighted figure being shown having a spiritual connection with a nonspecific environment.

Material(s): Adobe Photoshop

Process(es): An earthly figure in a euphoric state surrounded by layers of overgrowth



Work 5

Selected Works

Height: 19 inches

Width: 13 inches

Idea(s): I show a figure surrounded by distorted hobbies and traits that move organically around her

Material(s): Adobe Illustrator

Process(es): Shows the personality of a subject mixed with an acid trip.